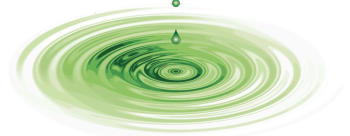


# What's on in Liverpool

Summer Term 2026



**ADDvanced Solutions**  
Community Network  
Supporting you to find the answers

## ADDvanced Solutions Community Network

supports the emotional health and wellbeing of neurodivergent children and young people, their families and the professionals that work with them. **No diagnosis or referral is needed to access the offer.**

### BELLE VALE Community Network Group

#### Tuesday mornings during term time

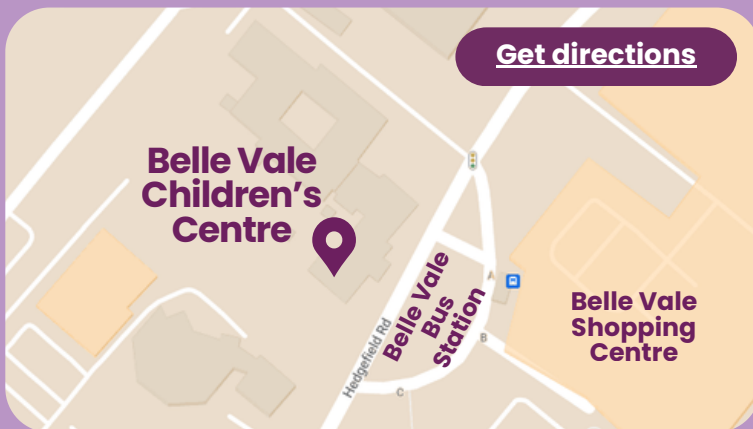


Join us from **9:30am - 11:30am**

**Venue:** Belle Vale Children's Centre, Hedgefield Road, Liverpool L25 2RW

**No booking needed, just come along**

Come along and meet our team, to learn more about neurodiversity from those who can share lived experiences and practical strategies. Our groups create a welcoming, accepting and relaxed environment for parents and carers, you are not on your own.



The centre is located opposite Belle Vale Shopping Centre and on the left of Gateacre School. The centre is accessible by bus via Belle Vale Bus Station.

#### Topics this term:

Tuesday 14 <sup>th</sup> April	Helping Neurodivergent Children to Understand their Emotions
Tuesday 21 <sup>st</sup> April	Understanding and Supporting Autism in Girls
Tuesday 28 <sup>th</sup> April	Preparing neurodivergent young people for the future
Tuesday 5 <sup>th</sup> May	We are joined by <b>the Speech and Language Therapy Team</b>
Tuesday 12 <sup>th</sup> May	Neurodiversity and Anxiety
Tuesday 19 <sup>th</sup> May	Understanding Puberty for Neurodivergent Young People

#### Half Term Break

Tuesday 2 <sup>nd</sup> June	Managing Emotions with Zones of Regulation
Tuesday 9 <sup>th</sup> June	We are joined by <b>SENDIASS/BARNARDOS</b>
Tuesday 16 <sup>th</sup> June	Supporting Transition and managing changes
Tuesday 23 <sup>rd</sup> June	Encouraging Friendships for Neurodivergent Children
Tuesday 30 <sup>th</sup> June	Preparing for the Summer Holidays
Tuesday 7 <sup>th</sup> July	<b>Open Session</b> seek advice around any problems

## If you can't make it face-to-face, join us online...

Online opportunities to learn more about neurodiversity from the comfort of your own home! With your camera and microphone off for your privacy, you can interact using the chat/Q&A feature to ask any questions you may have. Come along, learn more and get some strategies.

### Monday Online Community Network Group

**Mondays during term time**



**9:30am - 11:00am**  
**Online via Zoom**

[Click here to register](#)

Monday 13 <sup>th</sup> April	<b>Open Session</b> seek advice around any problems
Monday 20 <sup>th</sup> April	<b>Supporting Organisational Skills and Planning</b>
Monday 27 <sup>th</sup> April	<b>Using Music to Support Neurodiversity</b>
Monday 4 <sup>th</sup> May	<b>No Session due to BANK HOLIDAY</b>
Monday 11 <sup>th</sup> May	<b>Preparing Neurodivergent Young People for the Future</b>
Monday 18 <sup>th</sup> May	Developing <b>Theory of Mind</b> in Neurodivergent Children

### Half Term Break

Monday 1 <sup>st</sup> June	<b>Supporting Transition and managing changes</b>
Monday 8 <sup>th</sup> June	<b>Supporting Neurodivergent Children to Access Learning</b>
Monday 15 <sup>th</sup> June	<b>Autism with a Demand Avoidant Profile (PDA)</b>
Monday 22 <sup>nd</sup> June	<b>Choosing a School making an informed choice</b>
Monday 29 <sup>th</sup> June	<b>Preparing for the Summer Holidays</b>
Monday 6 <sup>th</sup> July	<b>Encouraging Independence and Building Confidence</b>

### Wednesday Online Community Network Group

**Wednesdays during term time**



**5:00pm - 6:30pm**  
**Online via Zoom**

[Click here to register](#)

Wednesday 15 <sup>th</sup> April	<b>Developmental Delay Supporting Areas of Need</b>
Wednesday 22 <sup>nd</sup> April	<b>Tantrums V meltdowns</b> what is the difference?
Wednesday 29 <sup>th</sup> April	<b>Using Music to Support Neurodiversity</b>
Wednesday 6 <sup>th</sup> May	<b>Preparing Neurodivergent Young People for the Future</b>
Wednesday 13 <sup>th</sup> May	<b>Supporting Transition and managing changes</b>
Wednesday 20 <sup>th</sup> May	<b>Specific Learning Difficulties</b> including dyslexia, dyspraxia, dyscalculia

### Half Term Break

Wednesday 3 <sup>rd</sup> June	<b>Supporting Neurodivergent Children to Access Learning</b>
Wednesday 10 <sup>th</sup> June	<b>Open Session</b> seek advice around any problems
Wednesday 17 <sup>th</sup> June	Using <b>Social Stories</b> to support understanding
Wednesday 24 <sup>th</sup> June	<b>Neurodiversity and Mental Health</b>
Wednesday 1 <sup>st</sup> July	<b>Preparing for the Summer Holidays</b>
Wednesday 8 <sup>th</sup> July	<b>ADHD, Autism and Masking</b>

If you are using a phone, you will need to download the Zoom app beforehand. Please be mindful of your data usage. If you do not have an unlimited data plan, you may need to connect to a Wi-Fi connection to prevent charges.

# Learning Programmes

## Neurodevelopmental Conditions Learning Programme

This programme equips parents and carers with a greater understanding of neurodevelopmental conditions, specific learning difficulties and associated mental health needs and provides practical strategies that support the difficulties that may present:

- **Neurodevelopmental Conditions - including Autism, ADHD, Sensory Processing Difficulties, Specific Learning Difficulties.**
- **Managing everyday challenges and behaviours - including sleep, toileting and eating difficulties.**
- **Your Local Offer, disability welfare rights and SEND, Early Help and Education Health Care Plans.**

**No referral or diagnosis is needed.**



### Face-to-Face Programme - Summer 1

**Across 3 Fridays - you attend all 3.**

From **9:30am - 2:45pm**

**Venue: Alt Valley Community Trust,**  
Altcross Road, Liverpool L11 0BS



[Click here for directions](#)

[Contact us to register](#)

Session 1 & 2	Session 3 & 4	Session 5 & 6
Friday 17 <sup>th</sup> April	Friday 24 <sup>th</sup> April	Friday 1 <sup>st</sup> May

**Or join us online...**



### Online Programme - Summer 1 (via Zoom)

**Tuesday Evenings from 6:30pm - 8:30pm**

[Click here to register](#)

Session 1	Session 2	Session 3	Session 4	Session 5	Session 6
Tuesday 14 <sup>th</sup> April	Tuesday 21 <sup>st</sup> April	Tuesday 28 <sup>th</sup> April	Tuesday 5 <sup>th</sup> May	Tuesday 12 <sup>th</sup> May	Tuesday 19 <sup>th</sup> May



### Online Programme - Summer 2 (via Zoom)

**Thursday Evenings from 6:30pm - 8:30pm**

[Click here to register](#)

Session 1	Session 2	Session 3	Session 4	Session 5	Session 6
Thursday 4 <sup>th</sup> June	Thursday 11 <sup>th</sup> June	Thursday 18 <sup>th</sup> June	Thursday 25 <sup>th</sup> June	Thursday 2 <sup>nd</sup> July	Thursday 9 <sup>th</sup> July

## Autism Learning Programme - Face-to-Face

The Autism Learning Programme has been designed to support and empower parents and carers in their understanding of how autism is experienced by children and young people, providing learning, guidance and practical support strategies. The programme is designed for parents and carers whose child or young person has an autism diagnosis. Subject to availability, places may be available to those whose child is under assessment for autism. Face to face programmes are delivered in various locations across Liverpool and Sefton. This offer is in partnership with Alder Hey NHS Trust Neurodevelopmental Pathway.

Each programme is tailored to address the specific challenges facing either **preschool and primary** age children or **tween and teenage** young people.

[Contact us to register](#)



### Autism Learning Programme *Preschool and Primary*

[Contact us to register](#)

Focusing on the specific presentations and needs of autistic children during childhood up to the end of primary school.

**Across 3 Mondays** - you should attend all sessions

From **9:30am - 2:45pm**

**Venue: CE3 Centre** (near Morrisons), Conleach Road, Speke, L24 0TY



[Click here for directions](#)

#### Session 1 & 2

Monday 13<sup>th</sup> April

#### Session 3 & 4

Monday 20<sup>th</sup> April

#### Session 5 & 6

Monday 27<sup>th</sup> April



### Autism Learning Programme *Tweens and Teens*

[Contact us to register](#)

Focusing on the specific presentations and needs of autistic young people as they navigate high school, puberty and increased social expectations.

**Across 3 Tuesdays** - you should attend all sessions

From **9:30am - 2:45pm**

**Venue: Family Life Centre**, Ash Street, Southport, PR8 6JH



[Click here for directions](#)

#### Session 1 & 2

Tuesday 23<sup>rd</sup> June

#### Session 3 & 4

Tuesday 30<sup>th</sup> June

#### Session 5 & 6

Tuesday 7<sup>th</sup> July

## Autism Learning Programme - Online

We also offer the Autism Learning Programme online, exploring how autism is experienced by children and young people. This offer is in partnership with Alder Hey NHS Trust, commissioned by NHS Cheshire & Merseyside.

This term, our online Autism Learning Programme focuses on **Tweens and Teens**



### Autism Learning Programme

**Tweens and Teens** - online via zoom

[Click here to register](#)

**Thursday Evenings** from **6:00pm - 8:30pm**

Session 1	Session 2	Session 3	Session 4	Session 5	Session 6
Thursday 16 <sup>th</sup> April	Thursday 23 <sup>rd</sup> April	Thursday 30 <sup>th</sup> April	Thursday 7 <sup>th</sup> May	Thursday 14 <sup>th</sup> May	Thursday 21 <sup>st</sup> May

## ADHD Learning Programme

Our new learning programme for Liverpool families is designed for parents and carers whose child or young person has a diagnosis of ADHD. Subject to availability, places may be available to those whose child is under assessment for ADHD.

The ADHD Learning Programme equips parents and carers with a greater understanding of ADHD and its impact on children and young people. We will share practical strategies that can be used to support the challenges and promote positive outcomes. The programme provides support around:

- **Recognising the different presentations of ADHD**
- **Understanding the impact on everyday life**
- **Sharing a diagnosis and talking to your child or young person about their ADHD**
- **Supporting mental health and wellbeing**
- **Exploring medication, strategies, interventions and lifestyle choices**
- **Managing everyday challenges of ADHD at home and in school**
- **Latest research, legislation and support services**



### Face-to-Face Programme - Summer 2

**Across 3 Wednesdays** - you attend all 3.

From **9:30am - 2:45pm**

**Venue: Alt Valley Community Trust,**

Altcross Road, Liverpool L11 0BS

[Contact us to register](#)

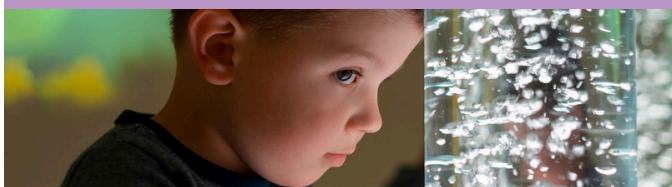


[Click here for directions](#)

Session 1 & 2	Session 3 & 4	Session 5 & 6
Wednesday 3 <sup>rd</sup> June	Wednesday 10 <sup>th</sup> June	Wednesday 17 <sup>th</sup> June

## Sensory Processing Difficulties Awareness Raising Training

Enabling parents and carers to understand sensory processing difficulties, emotional regulation and praxis with sensory strategies to better support their child or young person. Delivered in partnership with an Occupational Therapist Advanced Practitioner in Sensory Integration.



## Eating Difficulties Awareness Raising Training

Our Eating Difficulties Awareness Raising Training helps parent and carers to understand how our senses are involved in eating, why neurodiverse children and young people may struggle during mealtimes and provides practical strategies to help with eating difficulties.

**Please ensure that you have attended our Sensory Processing Difficulties Training before you attend our Eating Difficulties Training as this provides the base knowledge recommended for this course.**

**No referral or diagnosis is needed - contact us to register.**

### Additional Online Workshops

Short, online webinars to help you better understand a topic related to neurodevelopmental conditions. Interact via the chat and Q&A with any questions.

#### An Introduction to Autism (ASD)

Autism presentations in children and young people, and strategies to support at home and in school.

**Tuesday 21<sup>st</sup> April**  
9.30am - 12.00pm

[Click here to register](#)

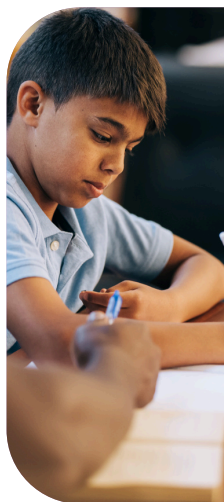


#### Introduction to the SEND Process and EHCPs

Understanding the processes to access appropriate support for children and young people with SEND in their educational setting.

**Tuesday 12<sup>th</sup> May**  
9.30am - 12.00pm

[Click here to register](#)



#### Sensory Processing Difficulties

Exploring the common challenges experienced by children and young people who have difficulty processing sensory information.

**Tuesday 23<sup>rd</sup> June**  
9.30am - 12.00pm

[Click here to register](#)



#### Supporting Executive Functioning Difficulties

Providing strategies to support organisation, sequencing and time management for neurodivergent children and young people.

**Friday 3<sup>rd</sup> July**  
9.30am - 12.00pm

[Click here to register](#)



If you are using a phone, you will need to download the Zoom app beforehand. Please be mindful of your data usage. If you do not have an unlimited data plan, you may need to connect to a Wi-Fi connection to prevent charges.

## Professionals Neurodevelopmental Conditions Awareness Raising Training

Designed to improve understanding of neurodevelopmental conditions (NDCs), how they may present and how one condition may overlap with another. Professionals attending this training will develop knowledge, skills and confidence to better support neurodivergent children, young people and their families:

- **Better Understand and recognise ADHD, Autism, and other NDCs**
- **Appreciate the impact that unsupported NDCs on an individual and their family**
- **Understand how sensory processing difficulties impact children and young people**
- **Identify local support available for professionals, children, young people and families**



**Next Available Training - ND Awareness**

**Wednesday 22nd April**

**From 9:15am - 4:00pm**

**Contact us to register**



**Venue: Salvation Army Walton, Cavendish Drive, L9 1NB**

**ADDvanced Solutions Community Network is commissioned to deliver a limited number of Neurodevelopmental Conditions Professional Awareness Raising Training. If you are interested in this full day's training for your team, please call the office on 0151 486 1788 or email [info@advancedsolutions.co.uk](mailto:info@advancedsolutions.co.uk)**



### Seeking Crisis Support?

ADDvanced Solutions Community Network is not a crisis service. If you, a child or young person is experiencing acute distress and is deemed to be a risk to themselves or others, please visit your local crisis service.

The details we request when you register are kept securely and used in line with our privacy policy: <https://www.advancedsolutions.co.uk/wp-content/uploads/2025/04/Privacy-Policy.pdf>

### Need further information advice or guidance around neurodiversity or our offer in your area?

Please call the office on **0151 486 1788**

email [info@advancedsolutions.co.uk](mailto:info@advancedsolutions.co.uk)

or visit our website [www.advancedsolutions.co.uk](http://www.advancedsolutions.co.uk)



**ADDvanced Solutions  
Community Network**

Supporting you to find the answers

Get in touch with us

